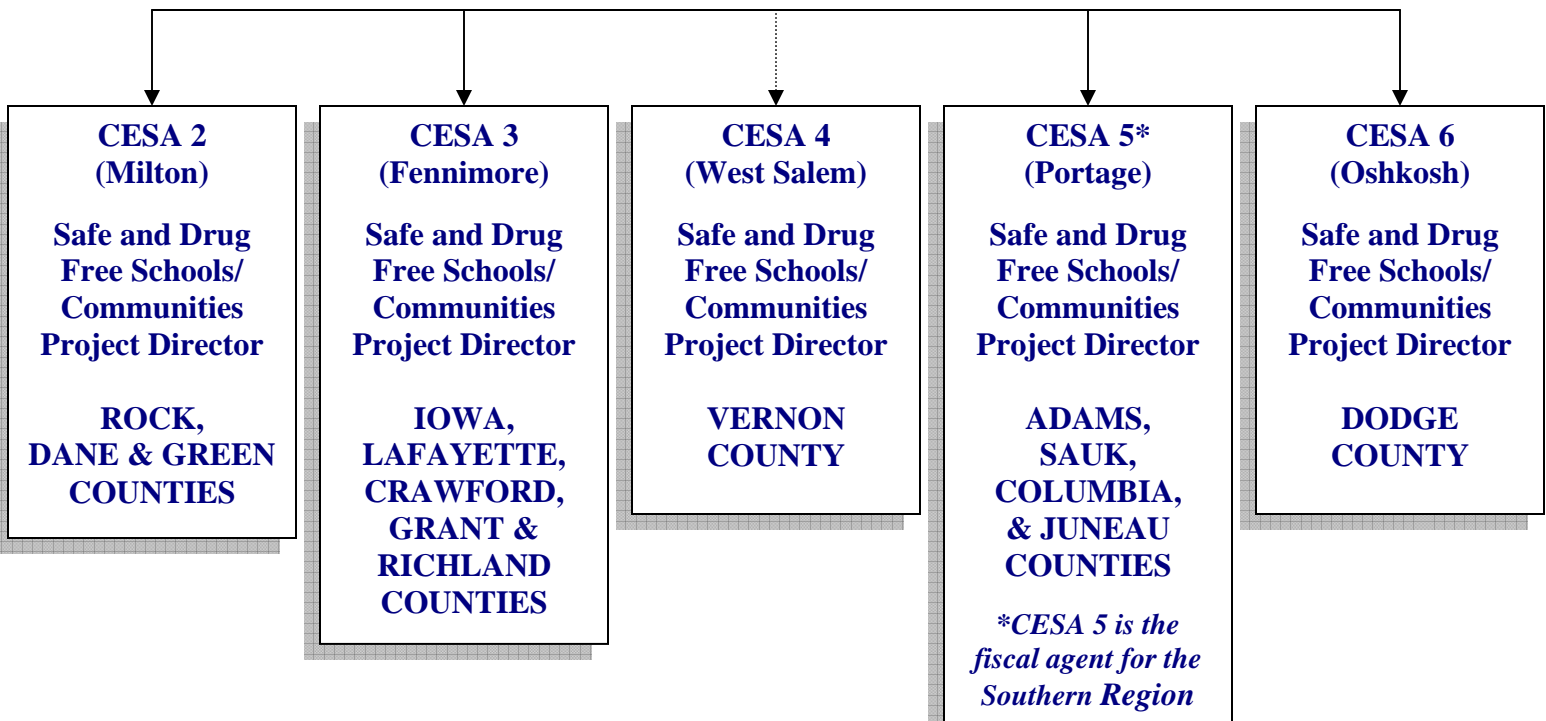


# SOUTHERN REGIONAL PREVENTION CENTER

ALLIANCE FOR  
WISCONSIN YOUTH

SOUTHERN REGIONAL  
PREVENTION CENTER

Southern Regional Counties and corresponding CESA  
that has responsibility for specific counties:



## Additional Organizational Information regarding CESAs:

- Each CESA receives \$75,000/year from DPI to be a resource for “Safe and Drug Free Schools and Communities” and is part of a state network called Wisconsin Alcohol Tobacco and other Drug Education Network (WATODEN). It is in this capacity that CESAs work with community coalitions.
- There are 12 CESAs which were created by state statute with geographic boundaries which are becoming more fluid
- Primary funding is from school districts with some funding from DPI and other sources
- The number of employees/CESA ranges from about 40 to 250 with a strong focus on special education services